



**Dear Interested Citizen:** This Fact Sheet provides a summary of recent developments related to this site, and announces a Public Availability Session to be held September 9, 2008 from 7-9 PM at the Hofstra University Mack Student Center (multi-purpose room) located in Hempstead, NY.

**Project Related Issues:**

Mr. Amen Omorogbe, P.E  
NYSDEC  
Division of Environmental  
Remediation  
625 Broadway  
Albany, NY 12233-7014  
(518) 402-9564

**Health-Related Concerns:**

Ms. Sharon McLelland  
NYSDOH, BEEI  
Flanigan Square  
547 River St., Room 300  
Troy, NY 12180-2216  
(800) 458-1158 Ext. 27880

**National Grid**

**Representative:**

National Grid's Community Representative for the Site is Lillie Manjarrez. The company's Telephone Hotline for Hempstead and Garden City residents in the vicinity of the site is:  
(516) 545-6161

August 2008

Hempstead Intersection Street  
Former Manufactured Gas Plant  
Nassau County, NY  
Site No.: 1-30-086

# FACT SHEET

## National Grid to Begin Soil Excavation in September 2008 at the Hempstead Former Manufactured Gas Plant Site

### Public Availability Session scheduled for September 9, 2008 to provide information to the Public

**Summary:**

National Grid (formerly KeySpan) will begin the previously announced Soil Excavation Phase of the Interim Remedial Measure (IRM) to remove contaminated soils from portions of the Hempstead Intersection Street Former Manufactured Gas Plant site ("Site"). This phase of the IRM was previously discussed at Public Meetings in December 2007 and February 2008. The remediation contractor is scheduled to mobilize at the Site beginning around September 15. The Work Plan for this IRM has been reviewed by the New York State Department of Health (NYSDOH) and the Nassau County Health Dept. (NCDH), and approved by the NYSDEC.

The IRM excavation includes the removal of approximately 4,000 cubic yards of coal tar-contaminated soil from several locations in the northern and eastern areas of the site. Contamination in these areas is shallow and thus suitable for initial excavation as part of this IRM. Most of the IRM excavation areas will extend to approximately eight feet deep. In some localized areas there will be deeper excavation to approximately 18 feet. Remaining contamination at the other portions of the site will be addressed during an upcoming full scale remedial effort.

**Human Health Exposure Information**

Most of the excavations will be performed under a large, movable enclosure with an air management system that includes dust and vapor controls. This movable structure will minimize odors associated with the IRM, as well as prevent releases of fugitive dusts and vapors from the contaminated areas of the site. Soils will be loaded into trucks within this structure and transported for off-site treatment and disposal. Soils removed from excavations under the enclosure will be loaded into trucks inside the enclosure, and then transported by truck for off-site treatment and disposal in accordance with NYSDEC requirements. All trucks will be cleaned before leaving the site into public streets. Clean soil will be placed on the site to backfill and restore the excavation areas. Some soil removal will also be conducted in areas where the temporary enclosure can not be placed safely. In these limited areas, the open excavation will be sprayed with odor control foams in conformance with an approved Community Air Monitoring Plan (CAMP) to keep odors from escaping into surrounding areas.

**Document Repositories:**

The Interim Remedial Measures Work Plan, the Final RI Report and other documents associated with the Hempstead Intersection Street site are available for review at the document repositories identified below:

**Garden City Public Library**  
60 7<sup>th</sup> Street  
Garden City, NY 11530

**Hempstead Public Library**  
115 Nichols Court  
Hempstead, NY 11550

Repositories are open during normal library hours.

**NYSDEC Region 1 Office**  
50 Circle Road  
Stony Brook, NY 11790  
Contact: Mr. Walter Parish  
(631) 444-0240  
M-F: 9-5 (by appointment)

**Vapor Intrusion Questions**

If you have questions regarding potential health concerns related to the operation of the former MGP site, please contact Sharon McLelland of NYSDOH at (800) 458-1158 Ext. 27880 or by email at: [spm03@health.state.ny.us](mailto:spm03@health.state.ny.us)

**Additional Information:**

For additional information on soil excavation, please visit the following website:  
<http://www.clu-in.org/download/citizens/excavation.pdf>

For a copy of the NYSDOH exposure information sheet, please visit the following website:  
<https://www.health.state.ny.us/environmental/about/Exposure.htm>

Some of the workers involved in the IRM will be required to wear protective gear, since they will be working in close proximity to the contaminated materials and could come into direct contact with them in the excavations. Outside the immediate work area, these precautions are not necessary. The project will be performed under NYSDEC and NYSDOH oversight, and because of this and the many safety precautions such as the temporary enclosure, Community Air Monitoring, etc. there are no special precautions necessary for the public.

National Grid has previously removed over 11,000 truckloads of similar soils from other MGP sites on Long Island and New York City, without incident or community impact. Trucks containing excavated soil will be using the Long Island Expressway (LIE) to leave Long Island to reach the out of state disposal facilities.

This IRM is the first phase of a larger, more comprehensive project, which will also address the presence of deeper contamination which can not be reached with conventional excavation. Tar collection wells are already in place to remove as much of the deeper tar as possible. As described in previous public meetings, the deeper soils will be treated and stabilized in place with a deep auger mixing system. This system will solidify the soil and greatly reduce its potential for contaminating groundwater. Pre-design work is currently under way for this phase of the project, which is expected to begin in late 2010.

**Site Location and History:**

The 7.5-acre Hempstead Intersection Street Former Manufactured Gas Plant site (MGP) is located on the border between the Villages of Garden City and Hempstead in central Nassau County, New York. Most of the site is located in Garden City. The attached IRM figure shows the site location. A large manufactured gas plant operated on the site from the early 1900s to mid 1950s. This plant used coal and petroleum products to create a flammable gas which was piped into the surrounding communities, where it was used for lighting, heating and cooking similar to how natural gas is used today. The gas manufacturing process produced a dark, oily liquid waste known as coal tar, and some coal tar escaped into the subsurface from plant related facilities.

**Traffic Safety**

A project-related Traffic Assessment was performed by a local traffic engineering firm with expertise in developing traffic plans for similar construction projects. The Assessment and recommendation were reviewed and accepted by the NYSDEC and provided to the Villages of Garden City and Hempstead for their consideration. Because the Hempstead Site borders both the Village of Hempstead and the Village of Garden City, the traffic plan includes an alternating weekly split for the local portion of the project-related traffic to reach the LIE. Local streets in Hempstead will be used one week and local streets in Garden City will be used the next week to reach the LIE until the IRM project is completed in about three months. All of the local streets being used already have truck traffic, and the trucks from this project are not expected to significantly affect traffic flow.

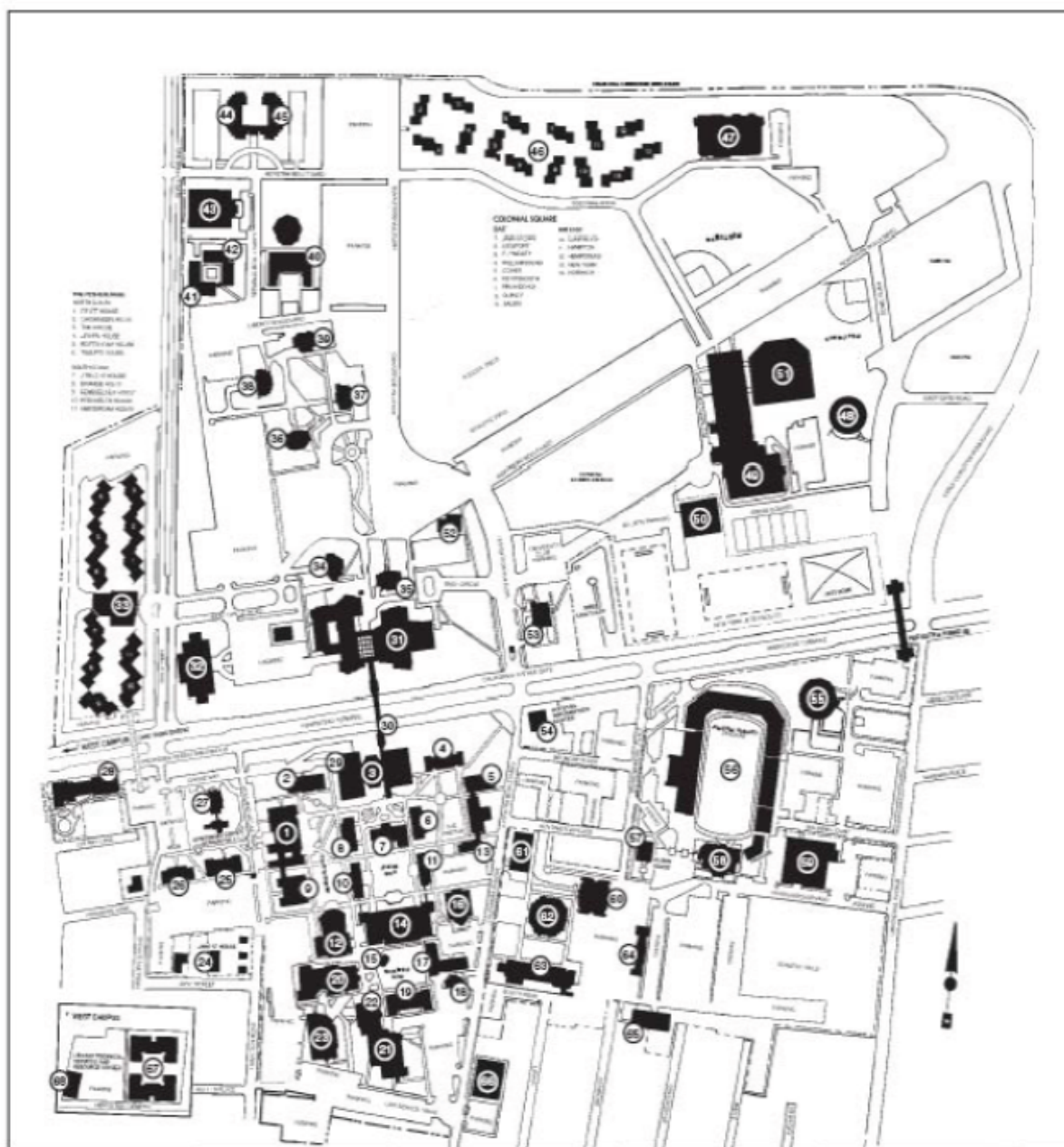
**Public Availability Session:**

The excavation phase of the IRM was previously discussed with the public at Public Meetings in December 2007, and February 2008, and the NYSDEC comment period ended for the IRM Work Plan. This P Availability Session is scheduled to provide additional project-related information prior to the start of work and to respond to community questions. The Public Availability Session will be held on September 9, 2008 from 7-9 PM at the Hofstra University Mack Student Center (multi-purpose room) located in Hempstead, NY.

Public availability sessions are not intended to be large-scale meetings. Instead, community members may come in at any time during the session and meet one-on-one with program personnel to discuss concerns and ask questions regarding the Site and upcoming clean-up activities.

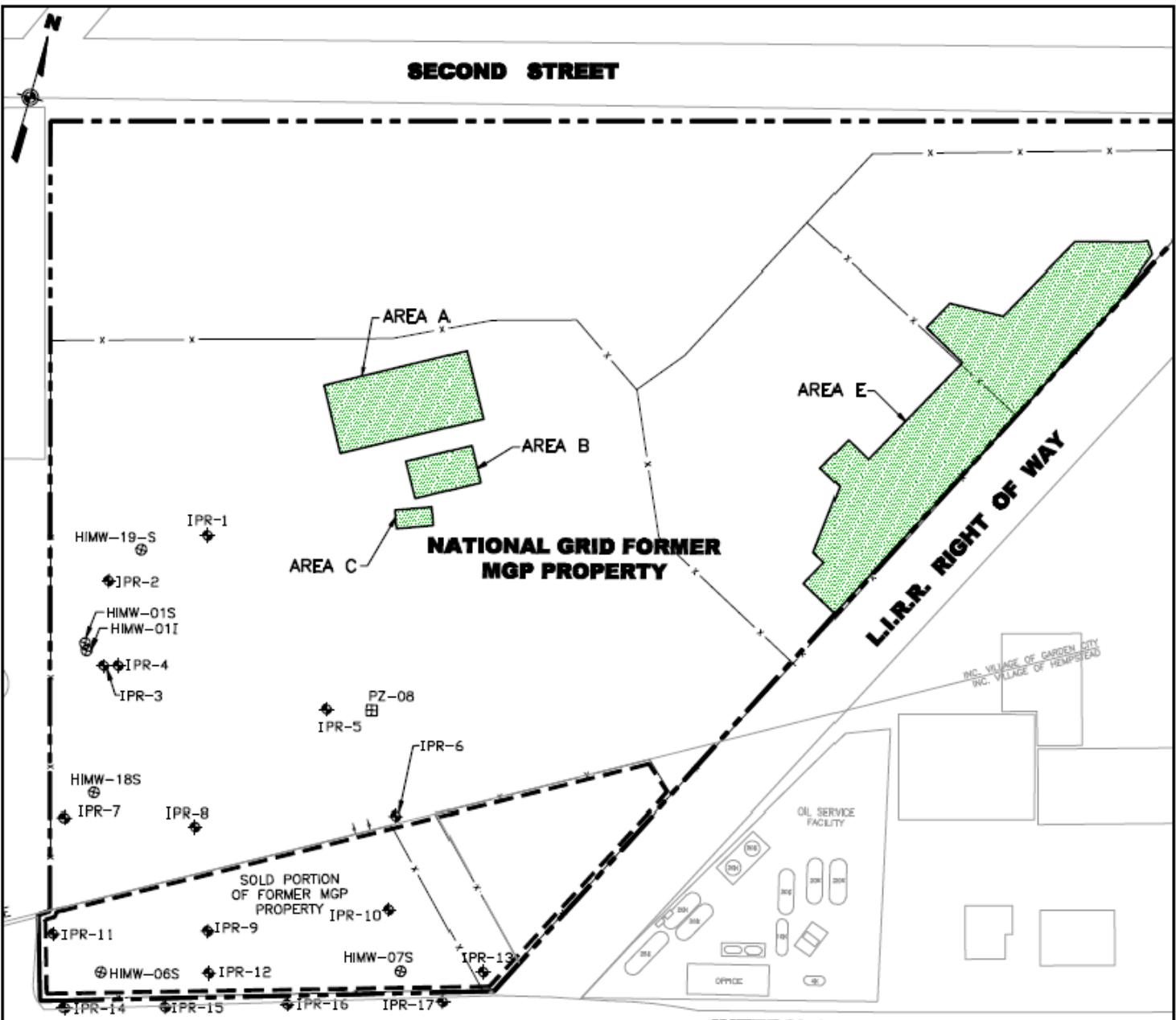
---

## HOFSTRA UNIVERSITY CAMPUS



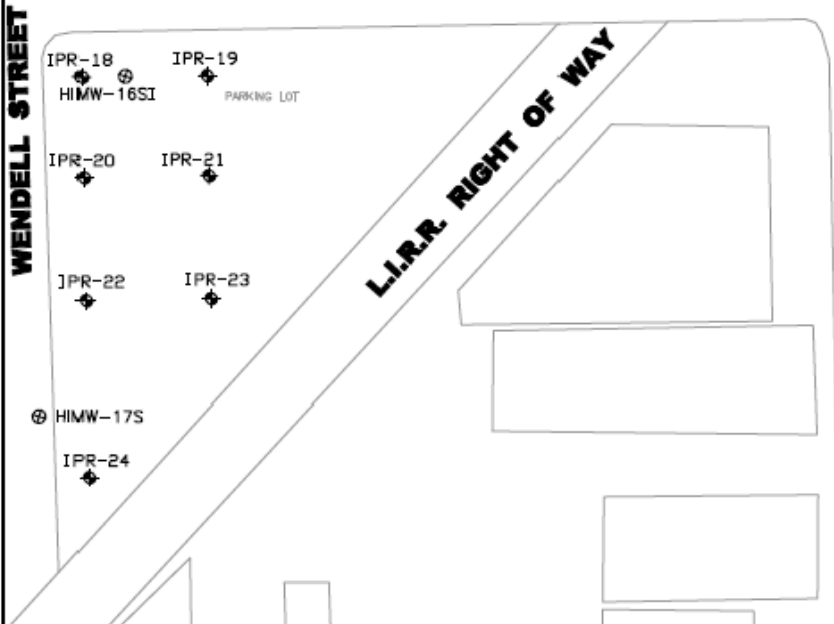
**Public Meeting on September 9, 2008 from 7:00 to 9:00 PM  
at the Sondra and David S. Mack Student Center, Building 31**

**SECOND STREET**



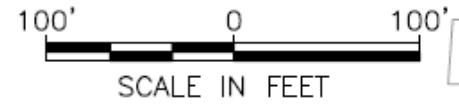
**L.I.R.R. RIGHT OF WAY**

**INTERSECTION STREET**



**LEGEND**

- IRM EXCAVATION AREAS A-E
- ◆ RECOVERY WELLS INSTALLED (IPR-1 TO IPR-24)
- ⊕ OTHER WELLS USED FOR RECOVERY



**NATIONAL GRID FORMER MGP SITE - INTERIM REMEDIAL MEASURES**